

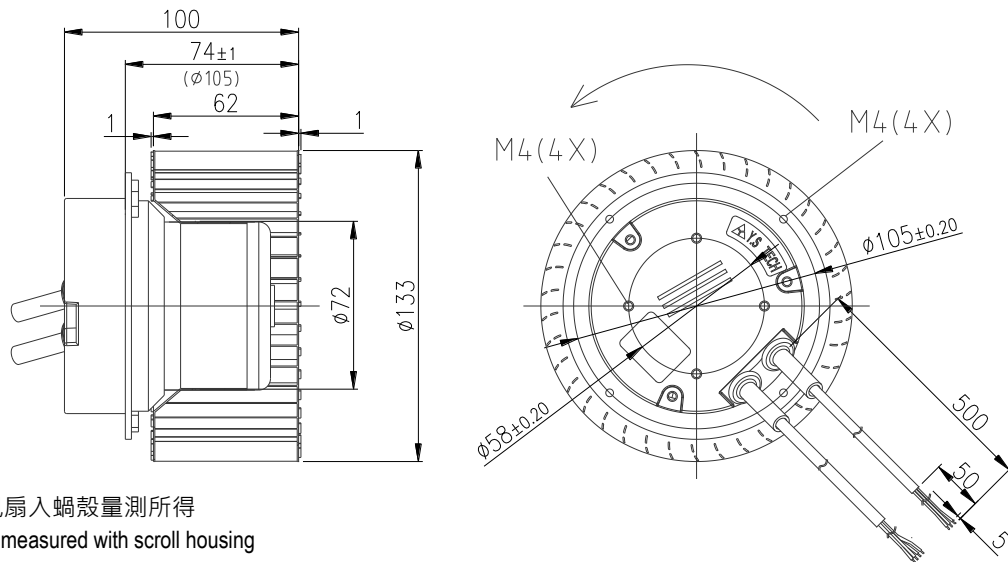
EC Centrifugal fans 離心扇

forward curved 前傾式, $\phi 133$



- **Material 材料:**
Impeller 扇葉: Hot-dip galvanized sheet steel (SGCC) 熱浸鍍鋅鋼板
Electronics housing 後蓋: Die-casting aluminum 壓鑄鋁合金
Motor shell 馬達殼: Steel, electro deposited black 電鍍黑鋼材
- **Direction of rotation 轉動方向:** CW view toward rotor 看自入風口為順時針
- **Number of blades 葉片數:** 38
- **Degree of protection 防水防塵等級:** IP65
- **Mode of operating 操作模式:** Continuous operation S1 連續操作 S1
- **Insulation class 絕緣等級:** B
- **Installation position 安裝方向:** Any 任何

Outline dimension 外觀尺寸



PQ 曲線為風扇入蝸殼量測所得
PQ curve was measured with scroll housing

Technical parameters 規格參數

Model name 機型編碼	WV213362HBL-7A2
Rated voltage 額定電壓(VAC)	230
Frequency 交流電頻率(Hz)	50/60
Current 電流(A)	0.94
Speed 轉速(RPM)	3,180
Power 功耗(W)	106
Max. airflow 最大風量(cfm)	322
Max. airflow 最大風量(m ³ /h)	548
Max. static pressure 最大靜壓(inAQ)	3.62
Max. static pressure 最大靜壓(Pa)	906
Noise 噪音(dBA)	66
Operating temperature 操作溫度(°C)	-25~60
Weight 重量(g)	1,227
Speed control 速控模式	0~10VDC/PWM

Performance curves 性能曲線

