

10 Watts Single Output Series (10W 单路输出系列)

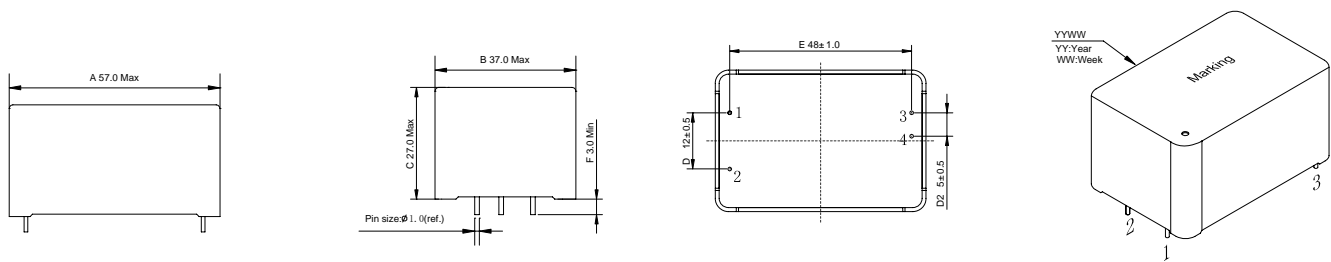
KEY FEATURES

- Universal Input Range 90-264VAC 50/60Hz
- Output range from 5VDC-24VDC, Also can be customized
- Switching Power Module for PCB Mount
- Encapsulated Design Prevent dust and humidity
- Self-Extinguishing Plastic 94V-0
- High efficiency, Low Temperature Rise
- Dielectric Strength 3600VAC
- Low standby power <0.3W
- Low Ripple and Noise
- Integrated EMC network
- Compact Size (57)LX(27)HX(37)W
- Design according to IEC61588, IEC60950, UL60950

主要性能参数

- 通用电压输入 90-264VAC 50/60HZ
- 输出电压范围 5-24VDC，也可以根据客户需求设计
- 可用在 PCB 上插装的电源模块
- 密封线路防水防尘
- 采用可自熄灭的 94V-0 塑料
- 低温升，高效率
- 双重绝缘耐压强度 3600VAC
- 待机功耗 <0.3W
- 低输出纹波噪声
- 内部集成 EMC 网络
- 精小尺寸 57 长 X27 高 X37 宽
- 根据 IEC61588, IEC60950, UL60950 设计

OUTLINE DIMENSION (外形尺寸)



Electronic Specification (特性)

Model No. (Single Output)	ZP10S0500W	ZP10S0600W	ZP10S0700W	ZP10S0800W	ZP10S0900W	ZP10S1000W	ZP10S1200W	ZP10S1500W	ZP10S1800W	ZP10S2400W		
Max Output Wattage (W)	10W											
INPUT	Voltage Range		90-264VAC/47-63HZ									
	Current (Full load)		250 mA max. (100 VAC) / 150 mA max. (240 VAC)									
Pin1:L	Inrush Current (<500us)		25 A max. (100 VAC) / 35 A max. (240 VAC)									
Pin2:N	No Load Loss		0.3W Max									
	Leakage Current		0.3mA MAX									
OUTPUT	Voltage (V.DC.)		5V	6V	7.5V	8V	9V	10V	12V	15V	18V	24V
	Voltage Accuracy		±3%									
	Current (mA) max		2000	1670	1330	1250	1110	1000	830	660	550	420
	Pin3:DC+	Ripple		<50mV max (Vp-p)								
	Pin4:DC-	Noise		<1% Output Voltage max (Vp-p)								
	Efficiency (TYP)		75%									
Protection Circuit		Over Power, Over Voltage And Short Circuit Protection										
Insulation	Input vs Output		3600V/50HZ 5mA 1min (OR 4200VAC/2S)									
Environment	Operating Temperature		-25° C...+70° C (At Full Load)									
	Storage Temperature		-40° C...+105° C									
Physical	Weight (Typ)		70g									
Safety	Agency Approvals		Refer to IEC60950-1/EN60950-1, IEC61588-1/EN61588-1, EN61588-2-6, EN61588-2-17									

10 Watts Single Output Series (10W 单路输出系列)

EMC	EMI (Conducted & Radiated Emission)	Compliance With EN 55022 Class A
	EMS (Noise Immunity)	Compliance With EN 55024, EN55014-1, EN55014-2, EN61000-3-2 Class A, EN61000-3-3